

# Evidence of Performance

## Airborne sound insulation of building components



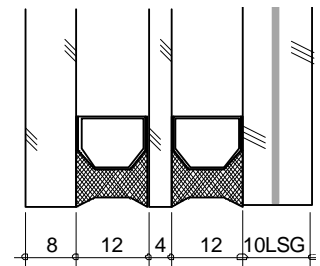
Test Report  
No. 14-000251-PR01  
(PB Z13-H01-04-en-01)

Client **PRESS GLASS SA Nowa Wies**  
Kopalniana 9  
42-262 Poczesna  
Poland

Basis  
EN ISO 10140-1 : 2010  
+A1:2012  
EN ISO 10140-2 : 2010  
EN ISO 717-1 : 2013

Product	Insulating glass unit
Designation	Type TH1,1 8+12+FL 4+12+55.2 TH1,1 kl.P2A Ar
External Dimensions (W x H)	1,230 mm x 1,480 mm
Construction	8/ 12 / 4 / 12 / 10LSG
Gas filling	Argon
Area related mass	55.1 kg/m <sup>2</sup>
Special features	-/-

### Representation



### Instructions for use

This test report serves to demonstrate the airborne sound insulation of a building component.

Applicable for Germany.

$R_w$  corresponds to  $R_{w,F}$  for DIN 4109, Annex 1, Table 40

### Validity

The data and results given relate solely to the tested and described specimen.

Testing the sound insulation does not allow any statement to be made on further characteristics of the present construction regarding performance and quality.

### Notes on publication

The ift-Guidance Sheet "Conditions and Guidance for the Use of ift Test Documents" applies. The cover sheet can be used as abstract.

### Contents

The test report contains a total of 7 pages:

- 1 Object
  - 2 Procedure
  - 3 Detailed results
  - 4 Instructions for use
- Data sheet (1 page)

Weighted sound reduction index  $R_w$   
Spectrum adaptation terms C and  $C_{tr}$



$$R_w (C; C_{tr}) = 42 (-2; -6) \text{ dB}$$

ift Rosenheim  
23.05.2014

Dr. Joachim Hessinger, Dipl.-Phys.  
Head of Testing Department  
Building Physics

Andreas Preuss, Dipl.-Ing. (FH)  
Head of Laboratory  
Building Acoustics